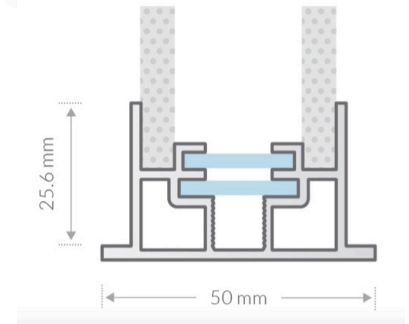
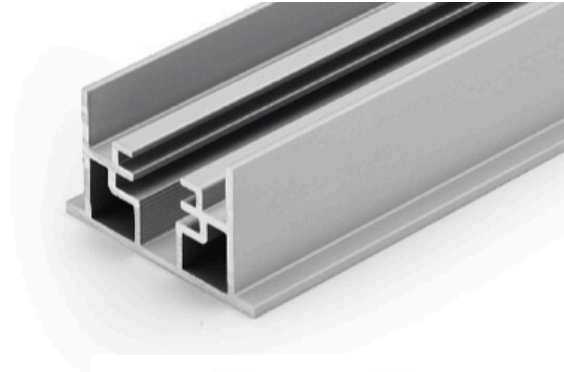


Double Side I-Sign Type

50mm Profile - EDGE-lit application

WALL MOUNT | SUSPENDED | MEDIUM
SIZE | EDGE-LIT | ONE SIDE VIEWING

This is a both sided backlit acrylic signage for suspended and wall mount applications. The acrylic can be pasted with a 3M tape on the profile with a 30mm border to hide the shadow LED to be placed on the edges for event lighting. The application is in hospitals, malls, airports, corporate offices, retail.



8 PCS

Product Specifications

Profile	Double side I-Sign Type 50mm EDGE-LIT
Depth , Thickness	Width of the profile is 50mm
Finish	Silver Anodised or powder coated
Length	4m length
Lighting	EDGE-lit applicationtion
Print Media	ACP, acrylic 3m pasted from the back