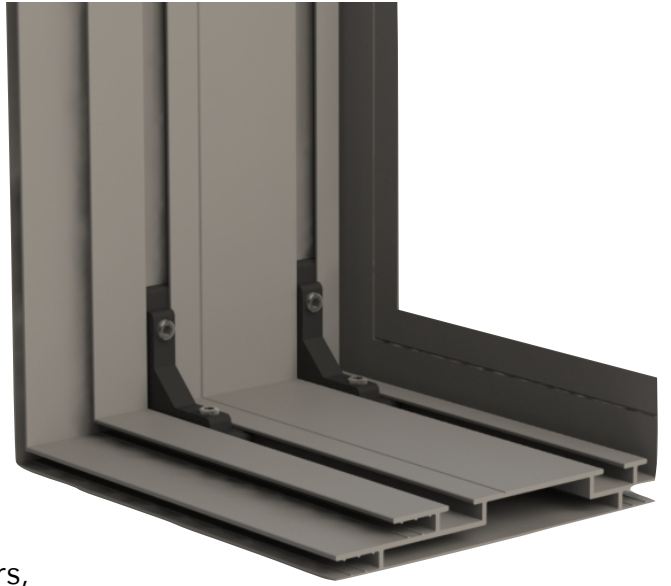


Wall Lite Frame

120mm

WALL MOUNTED | BACKLIT | FABRIC
PRINT | ABOVE 100 SQ.FT FRAME

For sizes upto 100 sq.ft, it is recommended to use thicker profile for the frame to look proportionate and evenly lite. Wall-Tex 100 is the most suitable frame to use in this case. With two joinery grooves at the corners, it gives perfect 90 degree corners. Recommended sizes are 5'X10', 6'X10', 8'X8', 8'X10' and 10'X10'.



Product Specifications

Profile	Wall Lite Frame 120mm with 8 corner joinery
Finish	Silver Anodised / Black/ white powder coating. Can be customised to RAL Colour
Fabric/Textile	PU coated Polyester Backlit Fabric 160GSM with Silicone/PVC strip
Printing	UV printing Roll-to-Roll / Hybrid printer upto 10 feet - Backlit Profile
LEDs / Driver / SMPS	Rigidbars on back ACP sheet, SMPS - 100W,150W, 200W, 300W
Warranty	2 year warranty
Input / Output Voltage	240 VAC / 12V DC output from SMPS
Power Consumption	10-13W / sq.ft
Brightness	Lux Range - 1000-1100 @ print surface

